

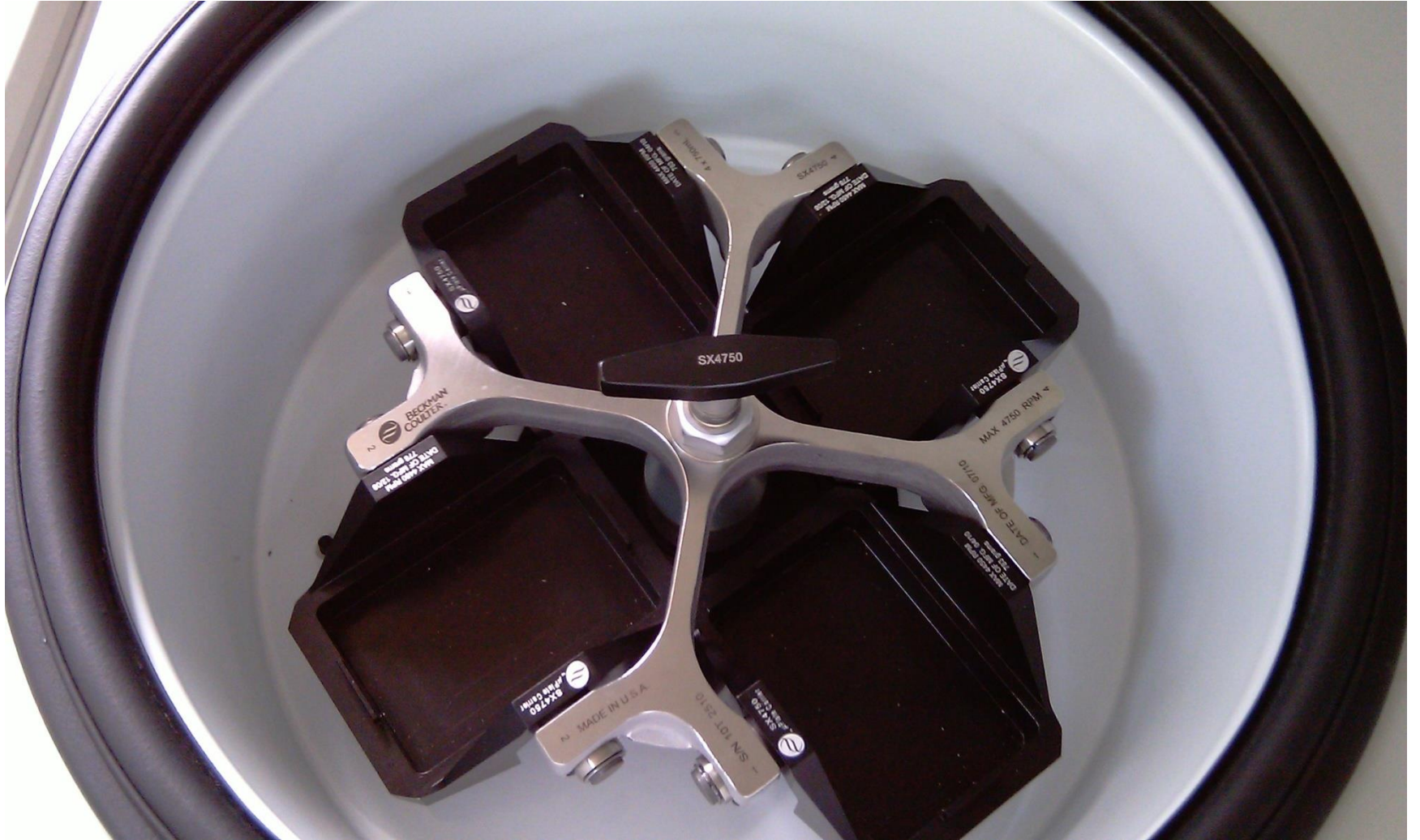
**BeckmanCoulter  
AllegraX15R**

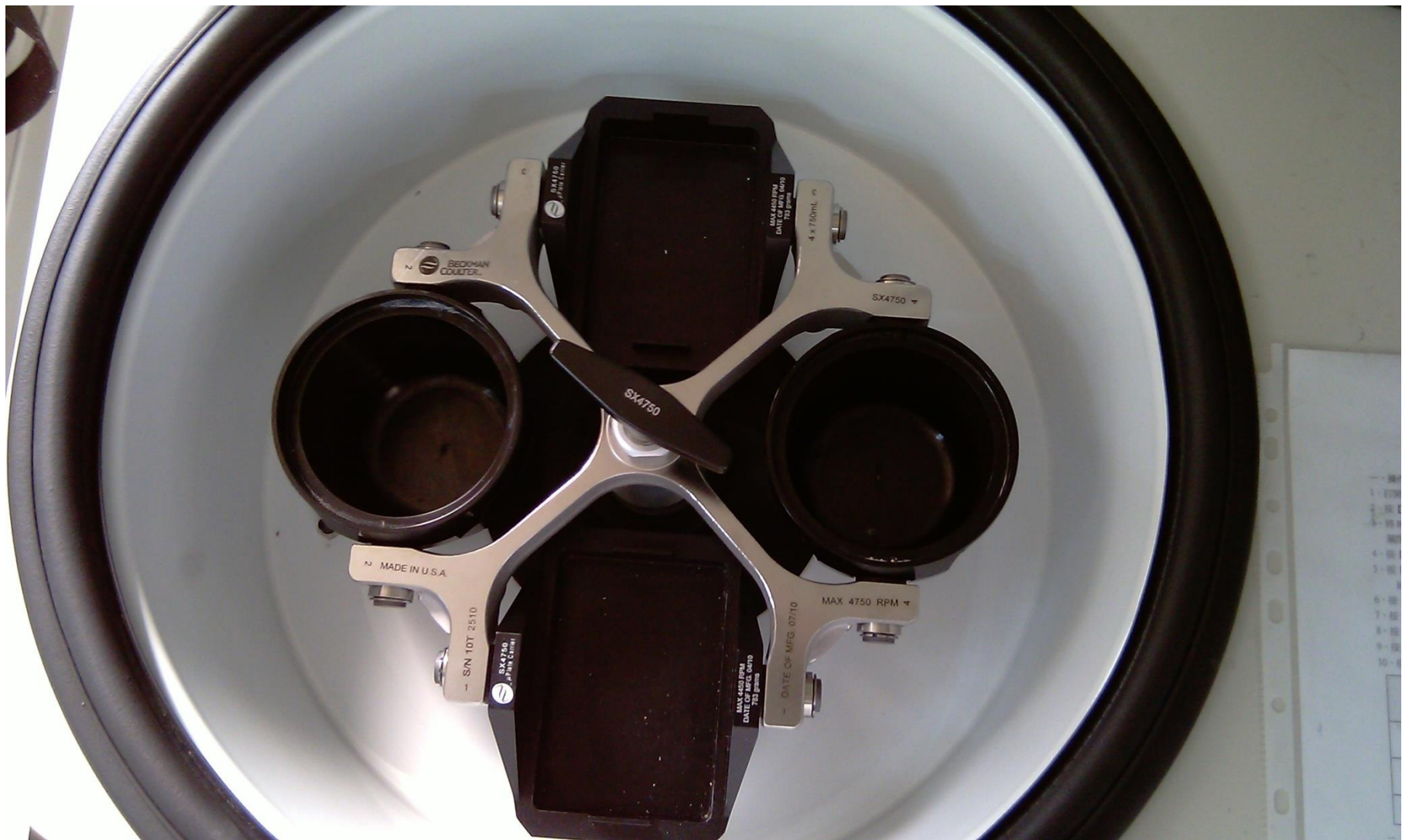
## I **SX4750 Swinging-Bucket Rotor**

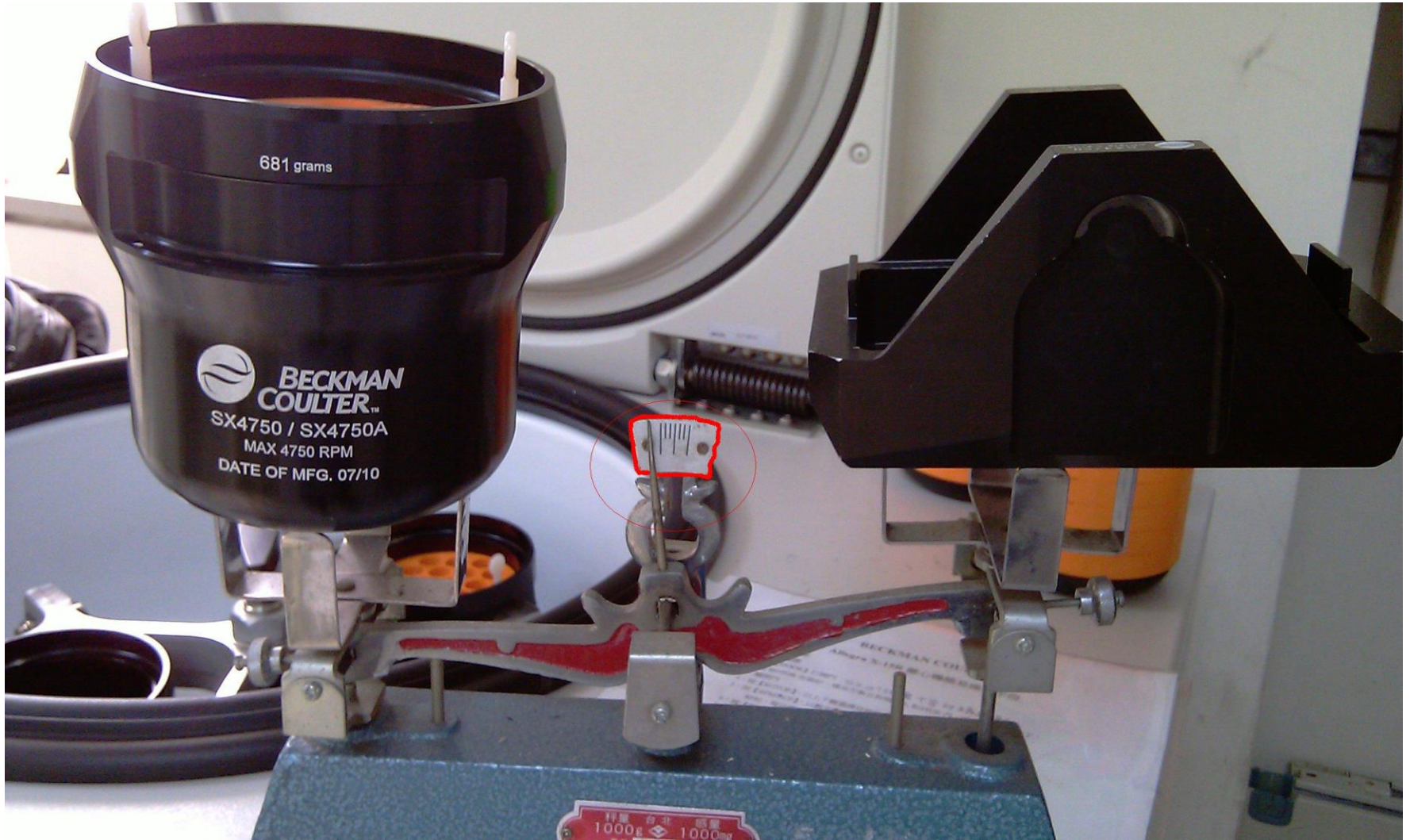
For Use in the Beckman Coulter  
Allegra X-12 Series,  
Allegra X-14 Series, and  
Allegra X-15R Centrifuges











681 grams

BECKMAN  
COULTER™  
SX4750 / SX4750A  
MAX 4750 RPM  
DATE OF MFG. 07/10

秤量 台北 感量  
1000g 1000mg



BECKMAN COULTER  
Allegra X-15R 离心机操作手册

- 1. 启动前
- 2. 按【POWER】键，打开离心机电源开关
- 3. 按【STOP】键，停止离心机运行
- 4. 按【START】键，启动离心机运行
- 5. 按【PAUSE】键，暂停离心机运行
- 6. 按【RESUME】键，恢复离心机运行
- 7. 按【EXIT】键，退出离心机运行
- 8. 按【ENTER】键，进入离心机运行

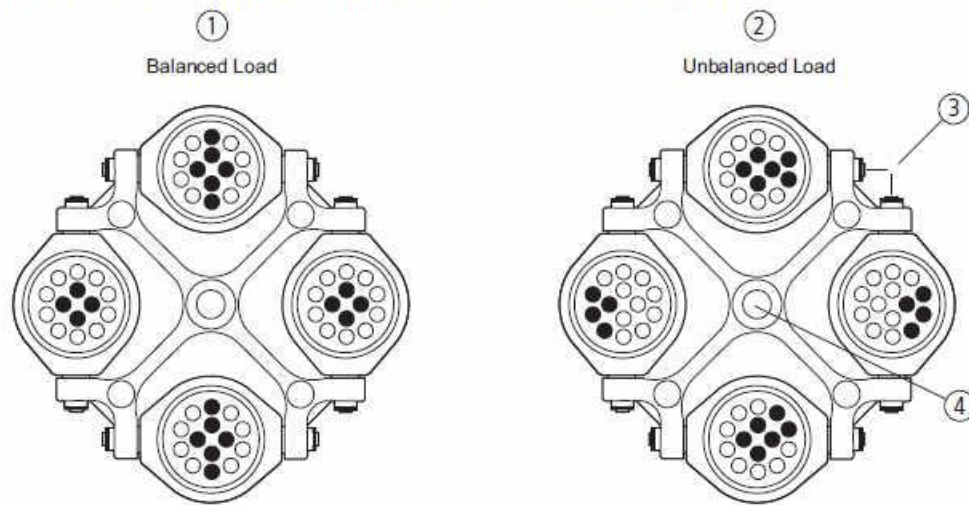
| Parameter  | Value |
|------------|-------|
| Speed      | 1500  |
| Time       | 10:00 |
| Temp       | 4     |
| Accel      | 1.0   |
| Decel      | 1.0   |
| Brake      | 1.0   |
| Hold       | 1.0   |
| Hold Temp  | 4     |
| Hold Accel | 1.0   |
| Hold Decel | 1.0   |
| Hold Brake | 1.0   |
| Hold Hold  | 1.0   |

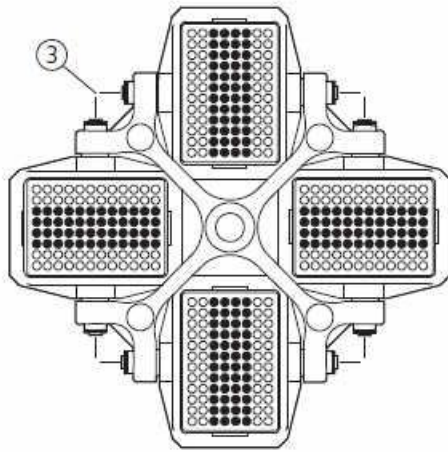
- 1. 按【PROGRAM】键，进入程序编辑界面
- 2. 按【SPEED】键，设置转速
- 3. 按【TIME】键，设置时间
- 4. 按【TEMP】键，设置温度
- 5. 按【ACCEL】键，设置加速度
- 6. 按【DECEL】键，设置减速度
- 7. 按【BRAKE】键，设置制动
- 8. 按【HOLD】键，设置保持
- 9. 按【HOLD TEMP】键，设置保持温度
- 10. 按【HOLD ACCEL】键，设置保持加速度
- 11. 按【HOLD DECEL】键，设置保持减速度
- 12. 按【HOLD BRAKE】键，设置保持制动
- 13. 按【HOLD HOLD】键，设置保持保持



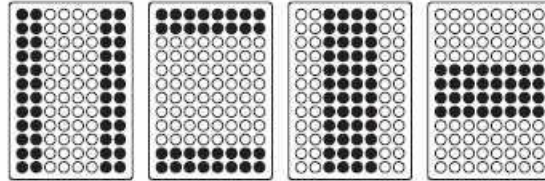


Figure 2 Examples of Correctly and Incorrectly Loaded Buckets and Carriers



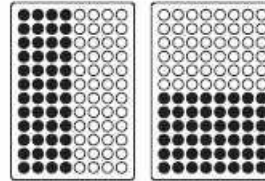


⑤  
CORRECT



⑥

⑦  
INCORRECT



⑧



MADE IN U.S.A.

S/N 107 2510

SX4750  
Beckman Coulter

DATE OF MFG. 07/95

MAX. 4750 RPM

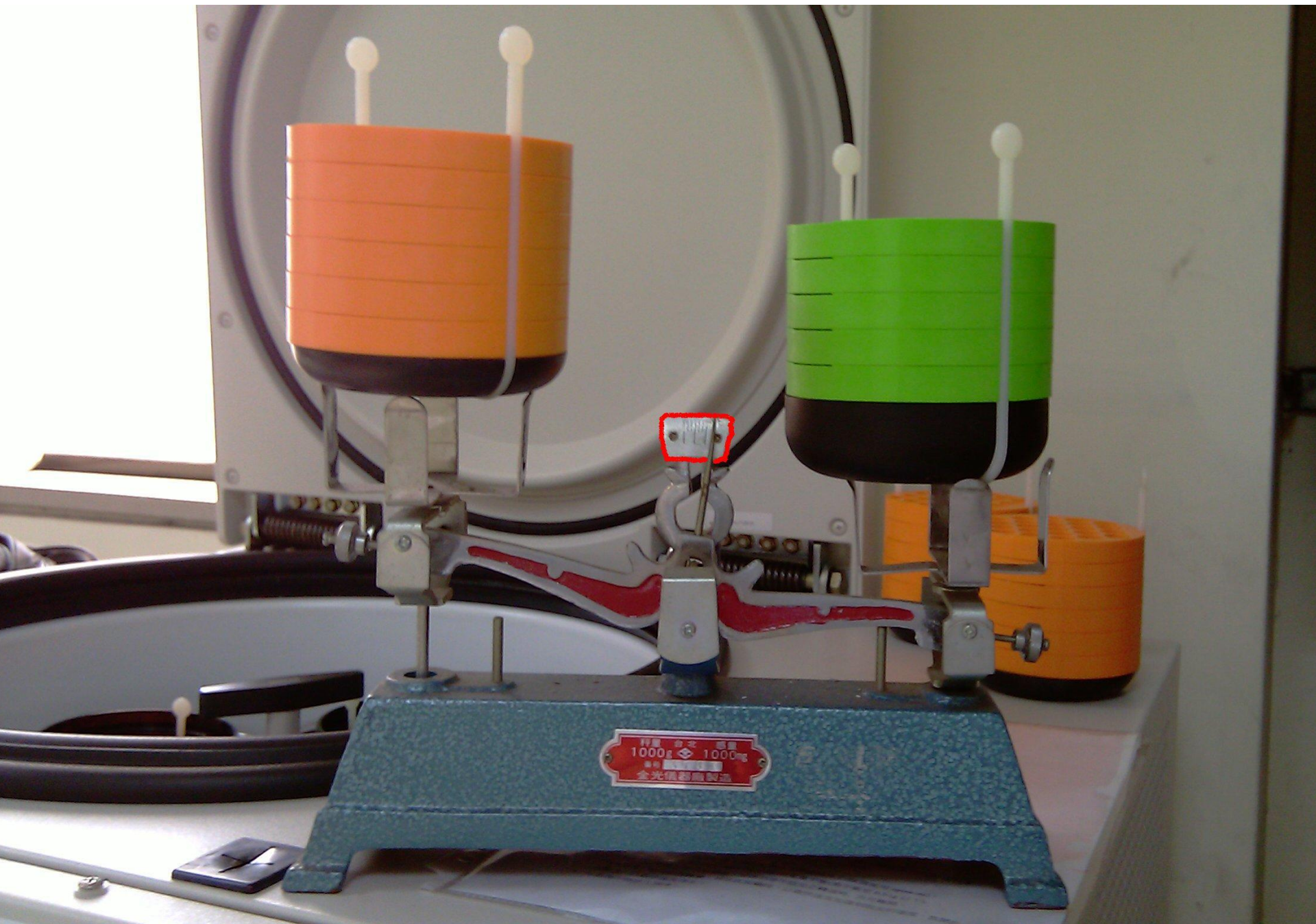
SX4750

SX4750

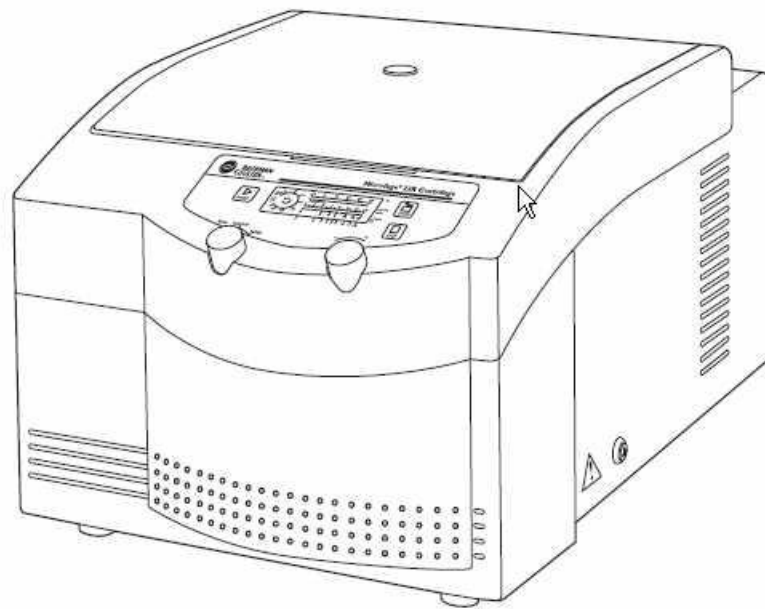
4 x 750mL

4 x 750mL



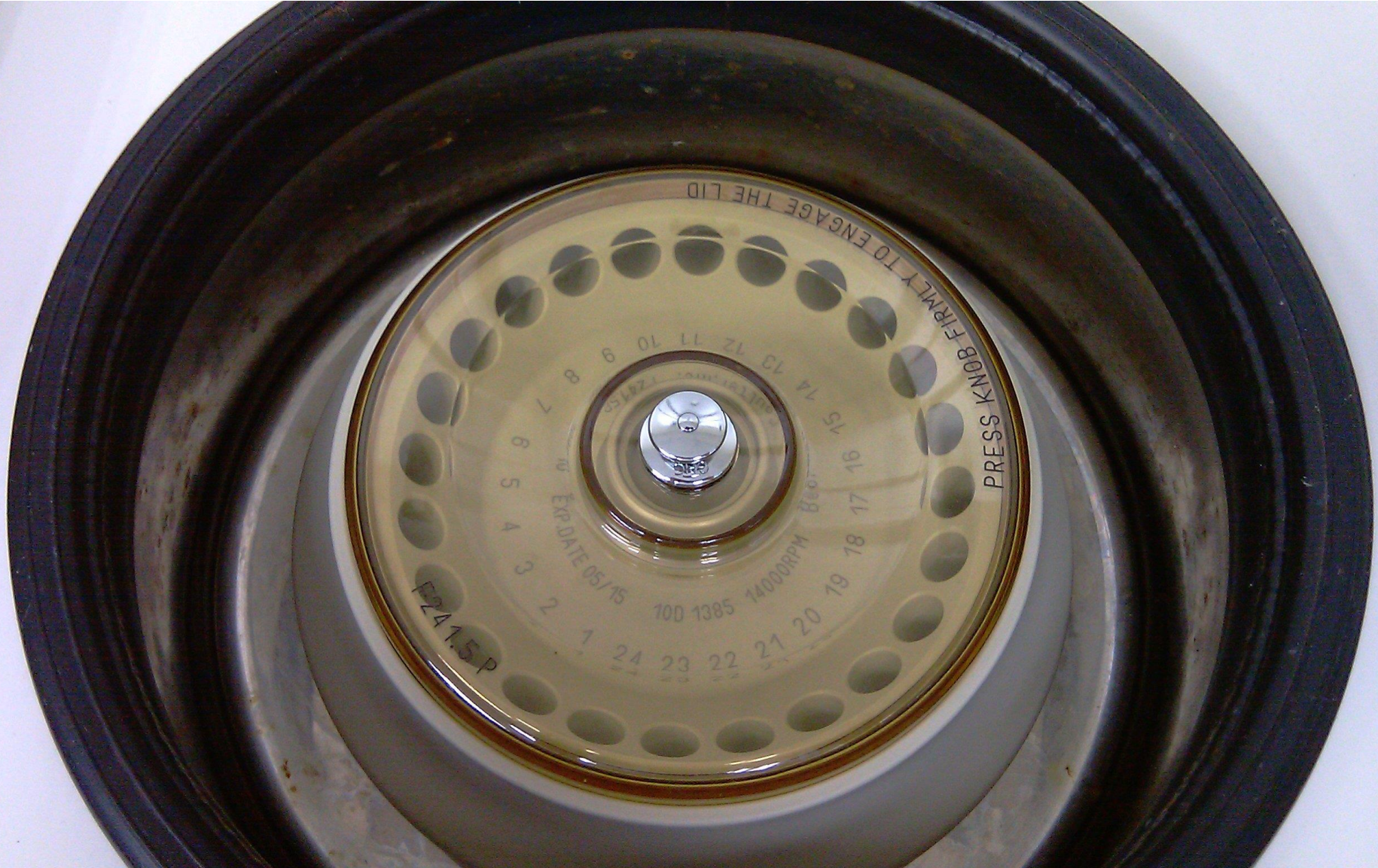


秤量 最大 重量  
1000g  $\diamond$  1000mg  
全光儀器製造



*Figure 1-1. The Microfuge 22R Centrifuge*





PRESS KNOB FIRMLY TO ENGAGE THE LID

PUSH

F2415P

EXP. DATE 05/15

100 1385

1400RPM

800

1 2 3 4 5 6 7 8 9 10 11 12 13 14 15 16 17 18 19 20 21 22 23 24





PRESS KNOP FIRMLY TO ENGAGE THE LID

